

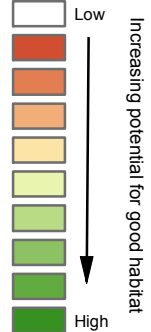
Critical Habitat Map

Eden, Vermont
Municipal Development Plan

Legend

- Bear Collision
- Bear Mast Area
- Bear Crossing
- Moose Collision
- Conserved Land
- Rare/Threatened Species Site
- Significant Natural Community
- Deer Wintering Yard
- Stream/River
- Lake/Pond

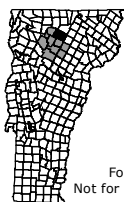
Wildlife Suitability Analysis



Lamoille County
Planning Commission
GIS Service Center
Municipal Planning

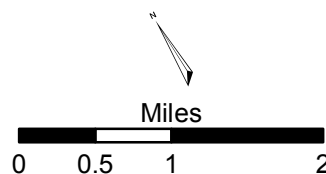
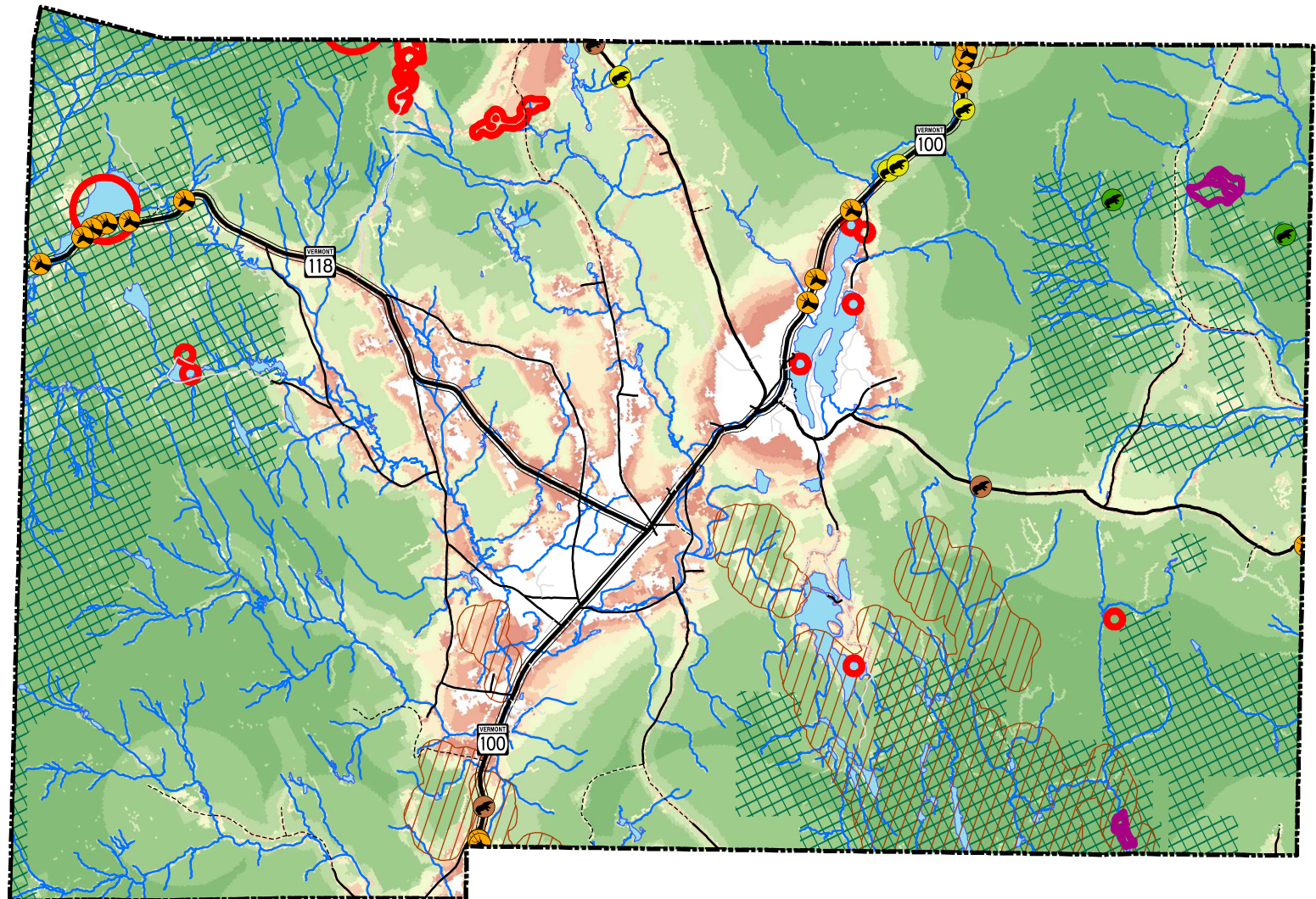


LCPC
PO Box 1637
52 Portland Street
Morrisville, VT 05661
802.888.4548 f 802.888.6938
www.lcpcvt.org
Updated May 2012



Traverse Mercator
VT State Plane
Meters, NAD83

For planning purposes only.
Not for regulatory interpretation.



SIGNIFICANT NATURAL COMMUNITIES AND RARE SPECIES SITES:
Rare, Threatened and Endangered Species & Significant Communities,
1:24000, Vermont Nongame and Natural Heritage Program, VANR, 2006.

DEER WINTERING AREAS: 1:24000 and 1:25000, VANR, 2011.

WILDLIFE SUITABILITY ANALYSIS/BEAR AND MOOSE DATA: Jens Hille,
Vermont Department of Fish and Wildlife; Eric Sorenson, Vermont Agency of
Natural Resources; Jon Osborne, Vermont Land Trust.

CONSERVED LANDS: University of Vermont Spatial Analysis Lab, 2009.

POLITICAL BOUNDARIES: 1:24000 USGS Quadrangles, VCGI, 1991.

ROADS: 1:5000 E-911 Road Data, 2011.

SURFACE WATER: On-screen digitized from 1:5000 digital orthophotos
using USGS 7 1/2' quadrangles and 1:20000 color infrared aerial
photography as additional source material, VCGI for VHD-USGS, 2001.